

Sleep Circular Mattresses value chain: the challenges of municipalities

Françoise Bonnet ACR+
fb@acrplus.org | www.acrplus.org

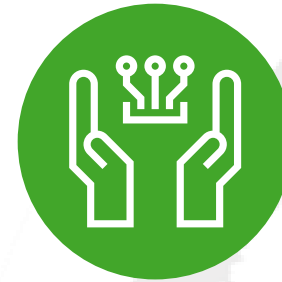
ACR+ STORY

Our international network supports the transition to the circular economy in cities and regions already for 30 years



- + About 90 members
- + 22 countries in EU and Med area
- + More than 1 100 municipalities represented
- + Strong team of 15 experts
- + Brussels-based
- + Multistakeholder approach

Our mission is to provide our members with concrete tools and approaches to enact the transition towards waste-free circular systems in their territories and beyond



ACR+ is at the service of its members



ACR+ is a gateway to technical data



ACR+ is the voice of decentralised authorities



MATTRESSES

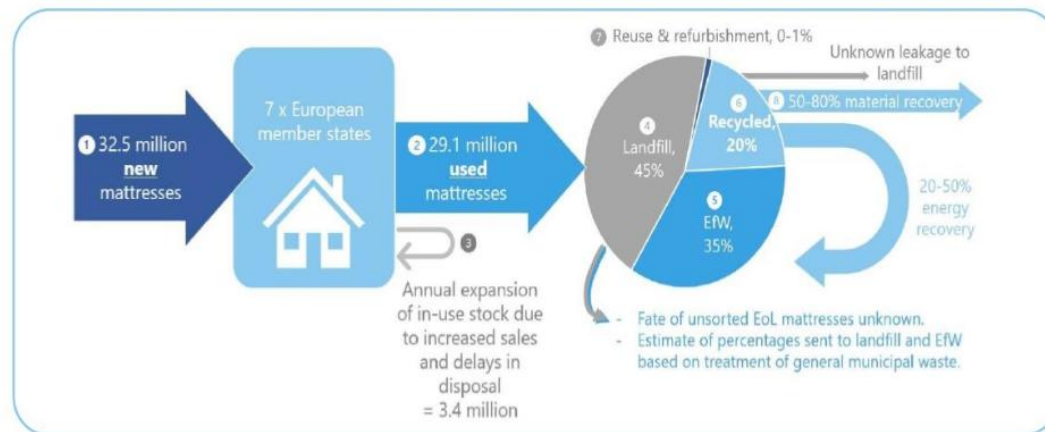
Still a waste of resources... because illegal dumping as well as lack of collection and recycling

Material flows (7 key MS)



Across the 7 countries, **360 million** mattresses are currently in-use.
32.5 million new mattresses are sold annually and **29.1 million** units are disposed of annually.

The 7 countries have an average mattress recycling rate of **20%**.



The 7 countries account for 68% of the EU-28 market by sales volume

Study conducted on behalf of EBIA in 2020, analysing the situation in 7 EU MS (BE, Fr, IT, NL, D, SP, UK)

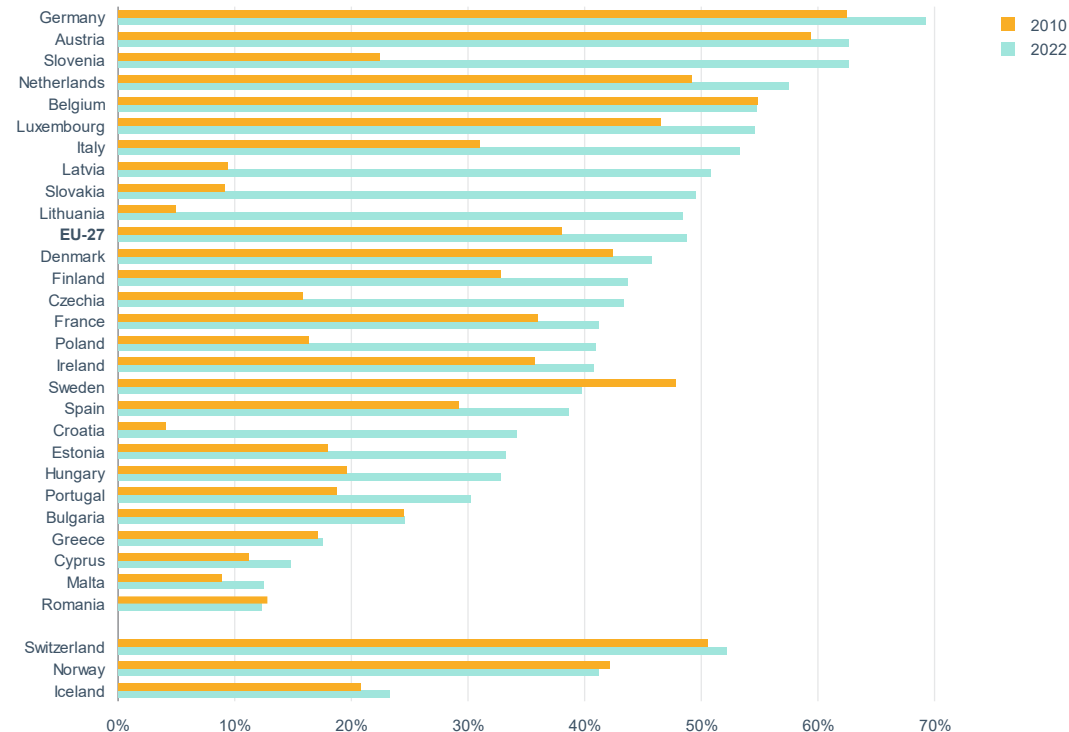
At ACR+, a topic already of interest since several years:

- EPR Club lunch debate in September 2021
- [H2020 UrbanRec project](#) (2016-2020)

MATTRESSES = MUNICIPAL WASTE

- + 60 % by 2030 and 65 % of municipal waste recycled by 2035
- + Maximum 10 % of landfilling by 2035
- + Illegal dumping

In 2023: 48 % = EU average of recycled municipal waste



CHALLENGES FOR LOCAL AUTHORITIES

Mattresses (bulky waste) collection: several challenges of different natures

- + **Setting a consistent, centralised, and pro-active communication:** clarifying sorting instructions, information on the different collection schemes and options
- + **Defining cost-effective collection modes matching households' constraints:** proximity, opening hours, households with/without cars, etc.
- + **Illegal dumping** : need to control non-compliances and give responses

DIFFERENT COLLECTION SCHEMES

Different options depending on the context (density...) and the system in place (EPR)

- + Civic amenity sites
- + Mobile collection points
- + Take back systems in shops (when EPR systems)
- + Door to door collection (by appointment)
- + Other



CHALLENGES FOR LOCAL AUTHORITIES

EPR schemes: an efficient driver for selective collection and recycling

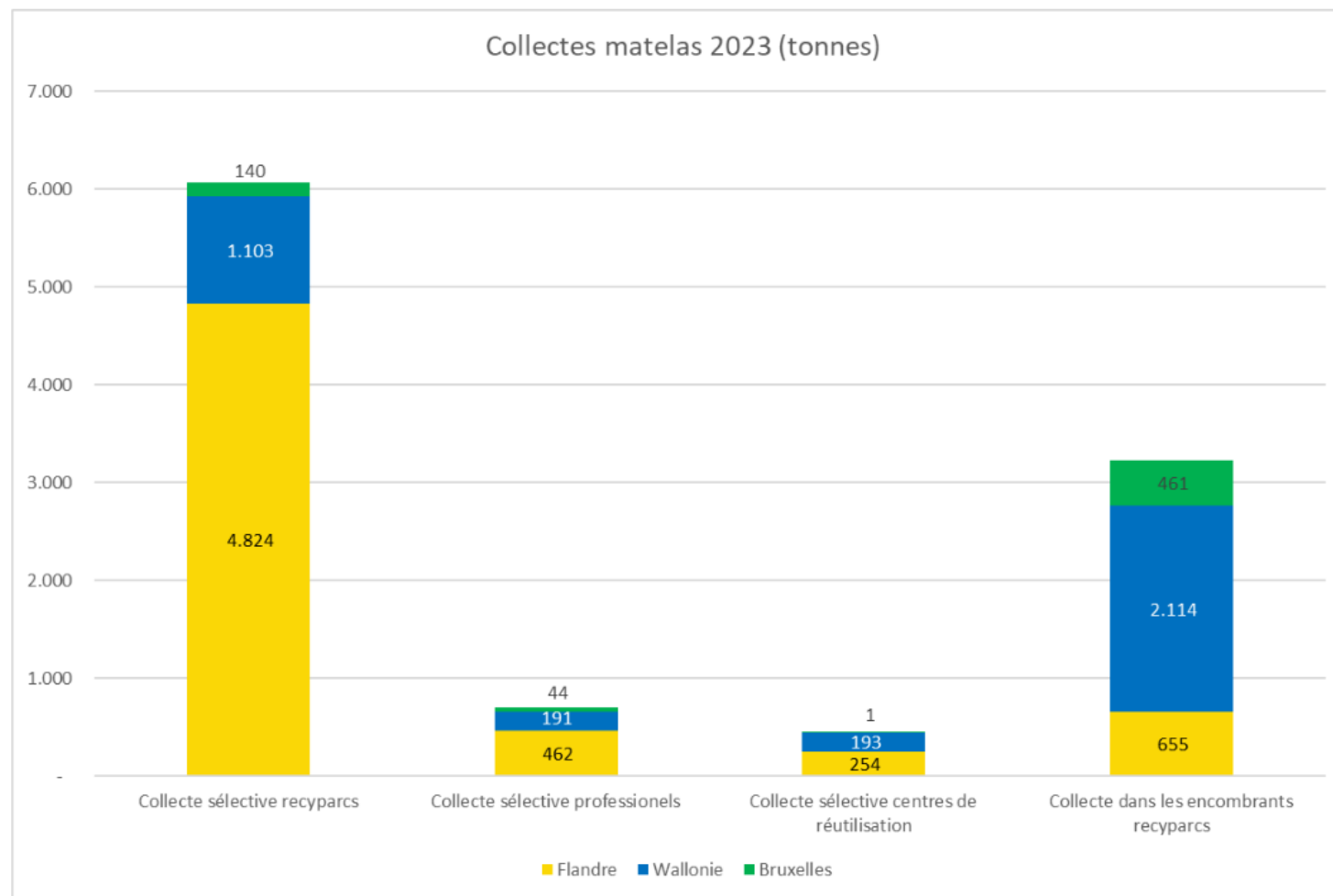
Collecte et recyclage, Ecomaison dépasse ses objectifs

L'Etat impose dans le cahier des charges d'agrément des objectifs de performance pour la collecte et pour la valorisation. Ils sont fixés au prorata de la part de marché de l'éco-organisme agréé, ainsi que des volumes annuels mis sur le marché par les producteurs :

- Taux de collecte : 45% en 2024, 48% en 2026 et 51% en 2028
- Taux de valorisation : 90% en 2024, 92% en 2026 et 94% en 2028

En 2023, Ecomaison a pris en charge la collecte de 1,5 million de tonnes d'éléments d'ameublement, soit près de 90% de la mise au rebus annuelle des Français. Selon les objectifs de l'Etat, cela représente 55% du taux de collecte. L'ensemble a été valorisé à 97% via le réemploi, le recyclage et la valorisation énergétique.

Selective collection modes in Belgium



Graphique 1 : Collectes par région

Source: Valumat 2023 activity report



Thank you, and let's keep in touch!

BUILD synergies with other circular economy actors

TAKE PART in studies and international projects

RECEIVE regular up-to-date information on latest trends

EXCHANGE experiences and practices with your peers

ENJOY direct access to a network of experts

INCREASE your visibility

info@acrplus.org

www.acrplus.org

[@ACRplus](https://twitter.com/ACRplus)

