

## Survey No 2 Results - Week Commencing 6<sup>th</sup> April 2020

### Collection Services

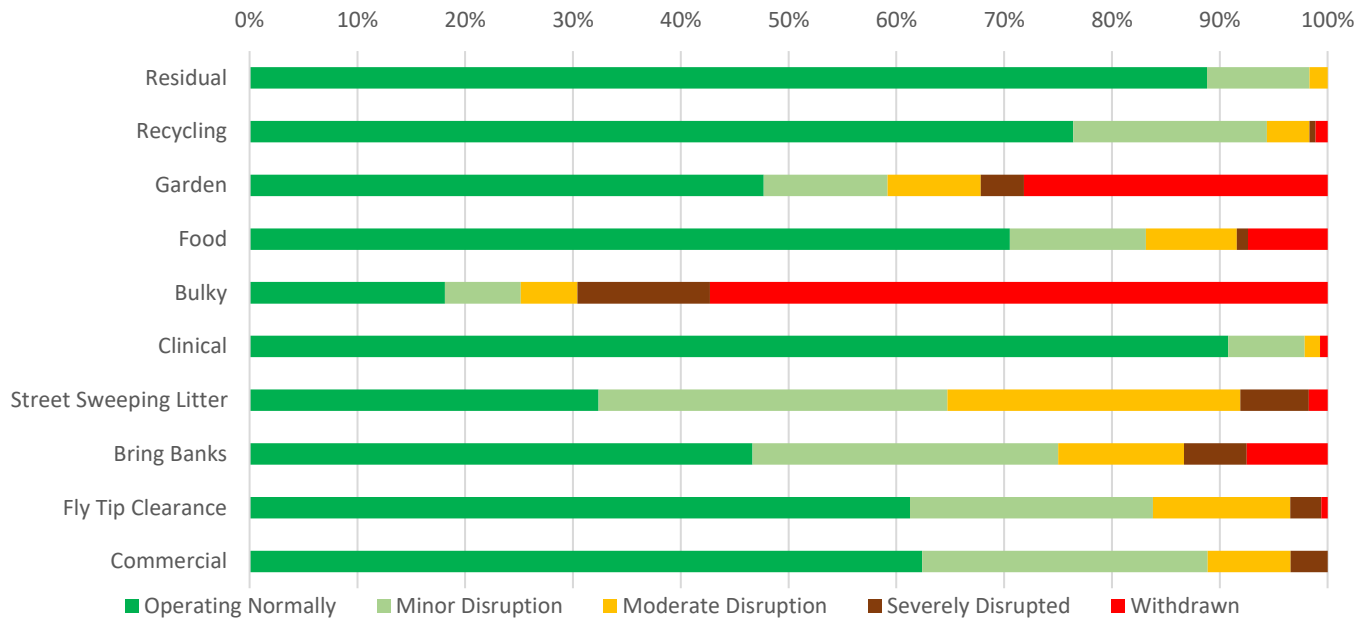
#### Summary:

- Core collection services continue to be maintained with little disruption: residual, recycling and clinical waste collections are all continuing to operate normally to date in most places.
- There is some indication of slightly less impact on collection services than in the previous week, and in general staff absence levels are a little lower.
- Food waste collections have seen some disruption in some places, but most authorities are still operating normally.
- Garden and bulky waste collection services are experiencing higher levels of service disruption and suspension.
- Commercial collections are being maintained normally or with only minor disruption in 88% of authorities.
- Bring banks continue to be operated normally or with only minor disruption in most authorities.
- Street sweeping and litter services are not operating normally in most places, two thirds of authorities are reporting disruption and some suspensions (although this is slightly less than the previous week).
- Fly tip clearance continues to operate normally in most places.

	Residual	Recycling	Garden	Food	Bulky
Operating Normally	89%	76%	48%	71%	18%
Minor Disruption	9%	18%	11%	13%	7%
Moderate Disruption	2%	4%	9%	8%	5%
Severely Disrupted	0%	1%	4%	1%	12%
Withdrawn	0%	1%	28%	7%	57%

	Clinical	Street Sweeping Litter	Bring Banks	Fly Tip Clearance	Commercial
Operating Normally	91%	32%	47%	61%	62%
Minor Disruption	7%	32%	28%	23%	26%
Moderate Disruption	1%	27%	12%	13%	8%
Severely Disrupted	0%	6%	6%	3%	3%
Withdrawn	1%	2%	8%	1%	0%

### Collection Service Levels



## Headlines:

For **residual waste**, situation is very much 'business as usual' to date. The vast majority (89%) of Waste Collection Authorities (WCAs) responding reported that their **residual waste** collection service is operating normally. 9% of WCAs reported minor disruption, and 2% reported moderate disruption – none reported serious disruption.

For **recycling**, the situation is also 'business as usual'. Over three quarters (76%) of WCAs reported that their **recycling** collection service is operating normally. 23% of WCAs reported that their recycling service is disrupted to some extent, with just 1% having suspended this service.

For **food waste** collection, the majority of providers are still operating normally. Over two thirds (71%) of WCAs that provide a separate **food waste** collection reported that their food waste service is operating normally. 22% reported some level of disruption, and 7% have currently suspended this service.

And **clinical waste** collections are also operating normally in most places. 91% of WCAs providing this service reported that it is operating normally, and 6% reported only minor or moderate disruption. 1% have currently suspended this service.

Other types of waste collection are experiencing higher levels of service disruption and suspension. 48% of WCAs responding reported that their **garden waste** collection service is operating normally, and 24% reported that their garden waste service is disrupted to some extent. Over a quarter (28%) have currently suspended this service, although this is less than the previous week.

Over a half (57%) of WCAs have currently suspended their **bulky waste** collection service, although this is less than the previous week. Some authorities are meeting pre-existing bulky waste collection requests but not taking new ones. 24% are experiencing some level of disruption. Only 18% continue to provide the service normally.

**Street sweeping and litter** services are mostly not operating normally, although the situation is a little better than the previous week. 65% of councils are experiencing some level of disruption, and 2% have suspended this service. Approximately a third (32%) continue to provide the service normally.

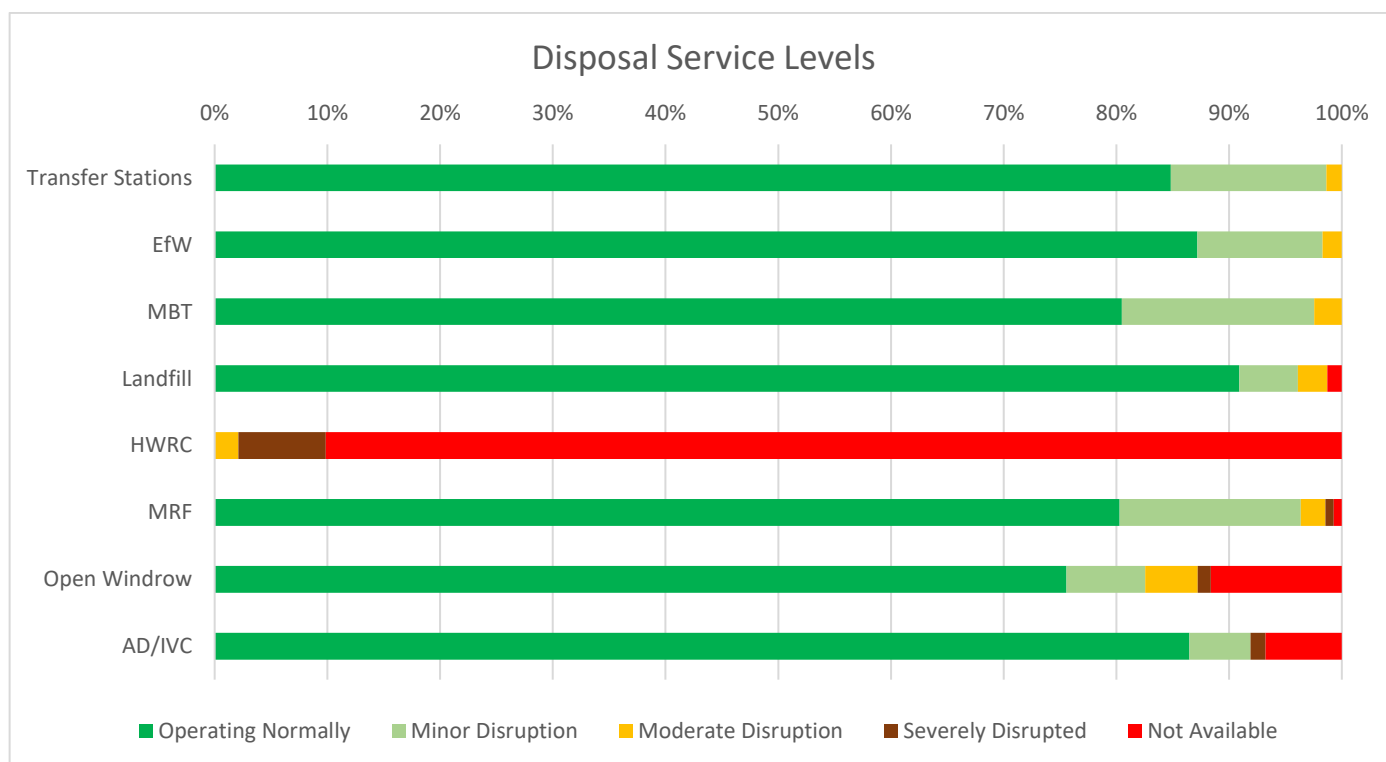
The second survey asked some additional questions for the first time. **Commercial collections** are being maintained normally or with only minor disruption in 88% of authorities, and none have been suspended. **Bring banks** continue to be operated normally or with only minor disruption in most authorities (75%), although 18% have been more disrupted and 8% suspended. **Fly tip clearance** continues to operate normally in almost two thirds (61%) of places, with 39% disrupted and 1% suspended.

## Disposal Services

### Summary:

- Most Energy from Waste (EfW) plants and landfill sites are continuing to operate normally.
- Most Waste Disposal Authorities (WDAs) have closed their Household Waste Recycling Centres for the time being.
- Other waste treatment services have been disrupted to a greater or lesser extent, and withdrawn in some places.

	Transfer Stations	EfW	MBT	Landfill	HWRC	MRF	Open Windrow	AD/IVC
Operating Normally	85%	87%	80%	91%	0%	80%	76%	86%
Minor Disruption	14%	11%	17%	5%	0%	16%	7%	5%
Moderate Disruption	1%	2%	2%	3%	2%	2%	5%	0%
Severely Disrupted	0%	0%	0%	0%	8%	1%	1%	1%
Not Available	0%	0%	0%	1%	90%	1%	12%	7%



## Headlines:

**Energy from Waste (EFW)** is operating normally in most places. 87% of Waste Disposal Authorities (WDAs) treating residual waste in this way reported normal operation, although this is slightly down on the previous week. The other 13% of WDAs reported minor or moderate disruption, no severe disruption or suspensions.

91% of the WDAs sending some waste to **landfill** are continuing to do so normally, although again slightly down on the previous week. 8% reported some disruption, and 1% that this method of disposal is not currently available.

85% of WDAs report that **transfer stations** are operating normally, the other 15% report only minor or moderate disruption. No severe disruptions or suspensions.

Most WDAs have suspended their **Household Waste Recycling Centres (HWRCs)** – 90% have withdrawn this service temporarily, up from 77% the previous week. None are reporting normal operation.

Of the WDAs sending some waste to **MBT**, 80% are continuing to do so normally, and the other 19% are reporting only minor disruption. No moderate/severe disruption or suspensions.

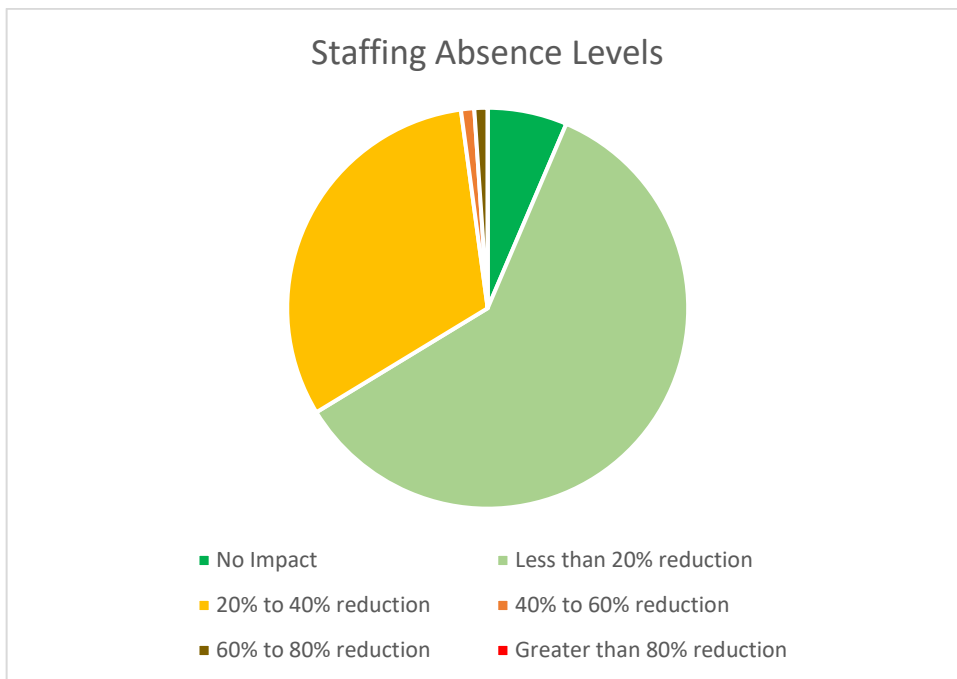
Most WDAs sending waste to **Material Recycling Facilities (MRFs)** continue to do so normally (80%). 19% are experiencing disruption, and 1% not available. Note that these figures should not be compared with the previous week because of some differences in interpretation.

76% of WDAs report that they continue to use **open windrow composting** normally, 13% with some disruption, and 12% not available. Again, these figures should be used cautiously as there may be some differences in interpretation.

The second survey included an additional question about the use of anaerobic digestion (AD) and/or in-vessel composting (IVC). 86% of WDAs continue to operate these treatments normally, 6% report some disruption, and 7% that they are not currently available.

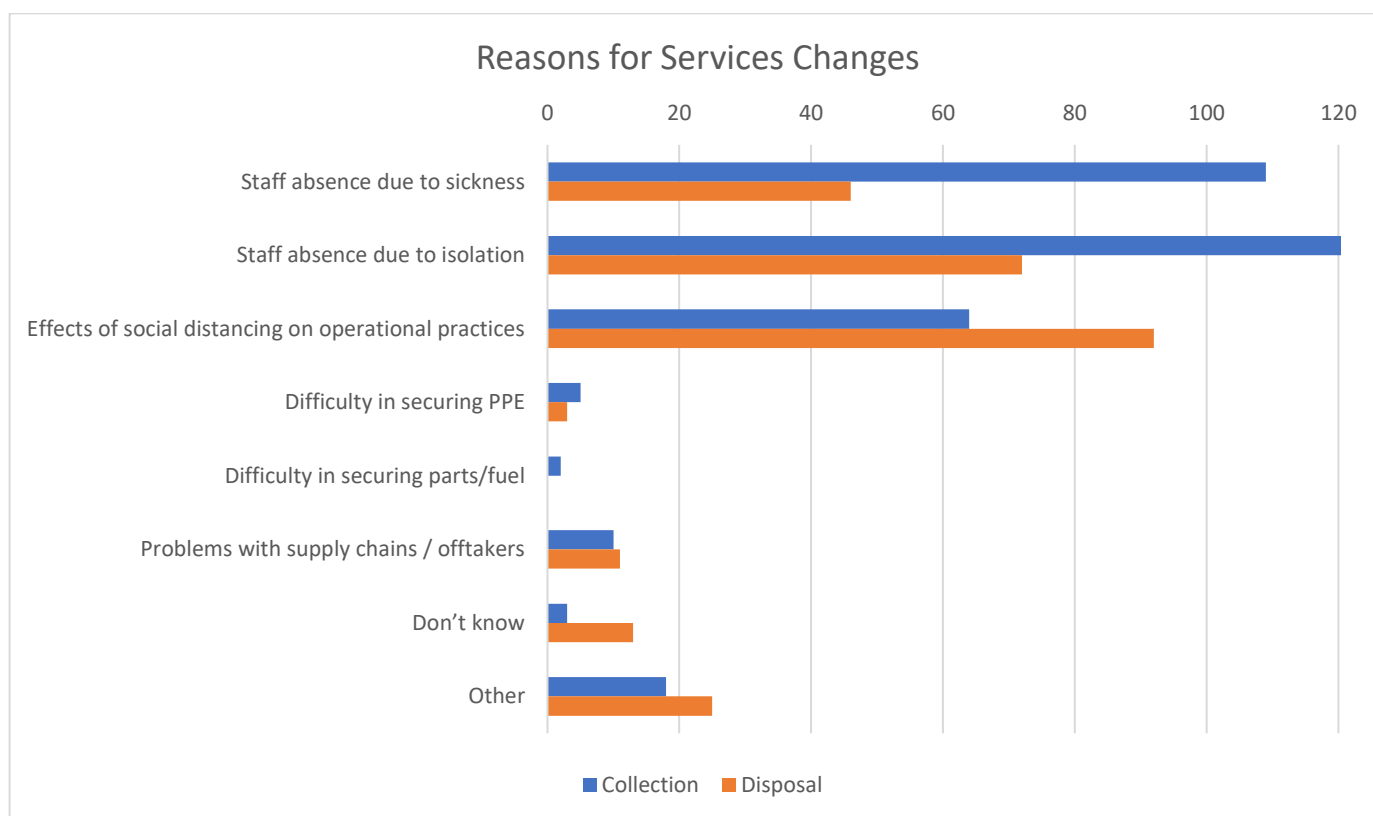
## Staff Absence Levels

No Impact	6%
Less than 20% reduction	60%
20% to 40% reduction	32%
40% to 60% reduction	1%
60% to 80% reduction	1%
Greater than 80% reduction	0%



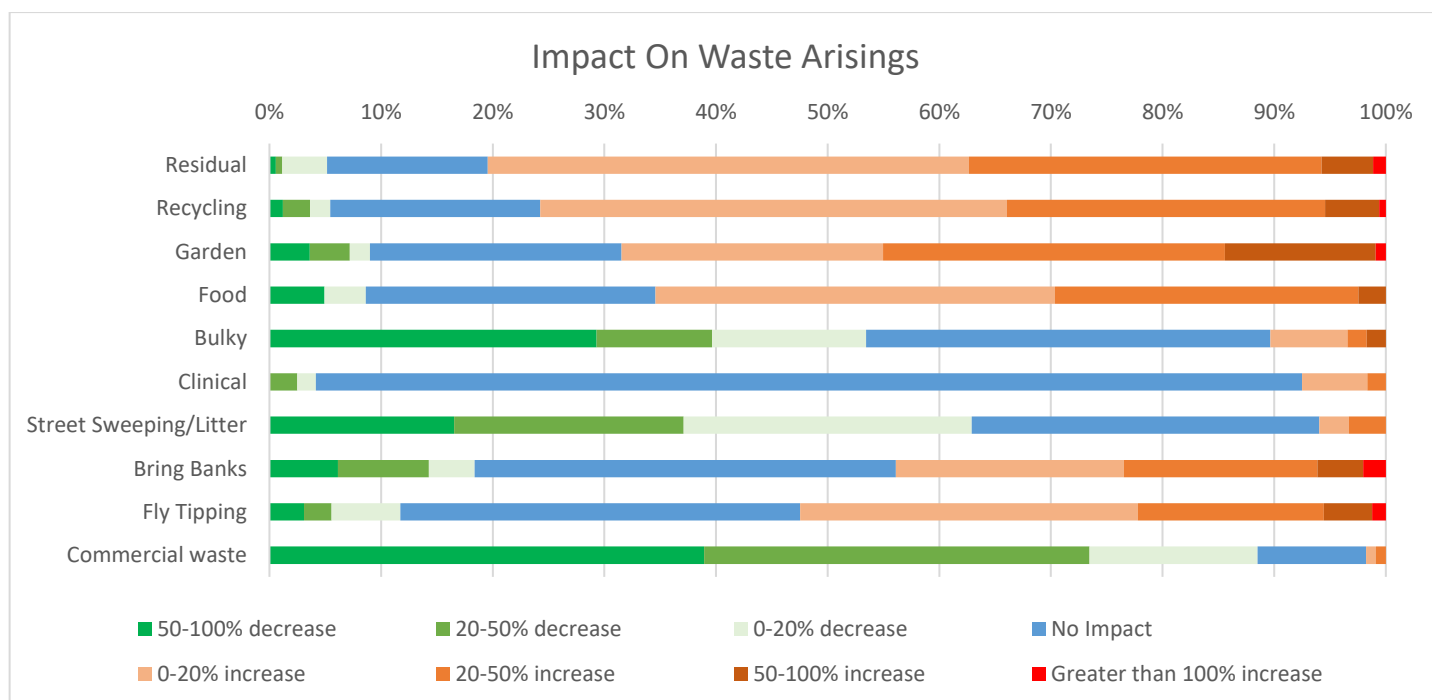
## Reasons for Service Changes

	Collection	Disposal
Staff absence due to sickness	109	46
Staff absence due to isolation	149	72
Effects of social distancing on operational practices	64	92
Difficulty in securing PPE	5	3
Difficulty in securing parts/fuel	2	0
Problems with supply chains/offtakers	10	11
Don't know	3	13
Other	18	25



### Changes in Waste Arisings (exc withdrawn services)

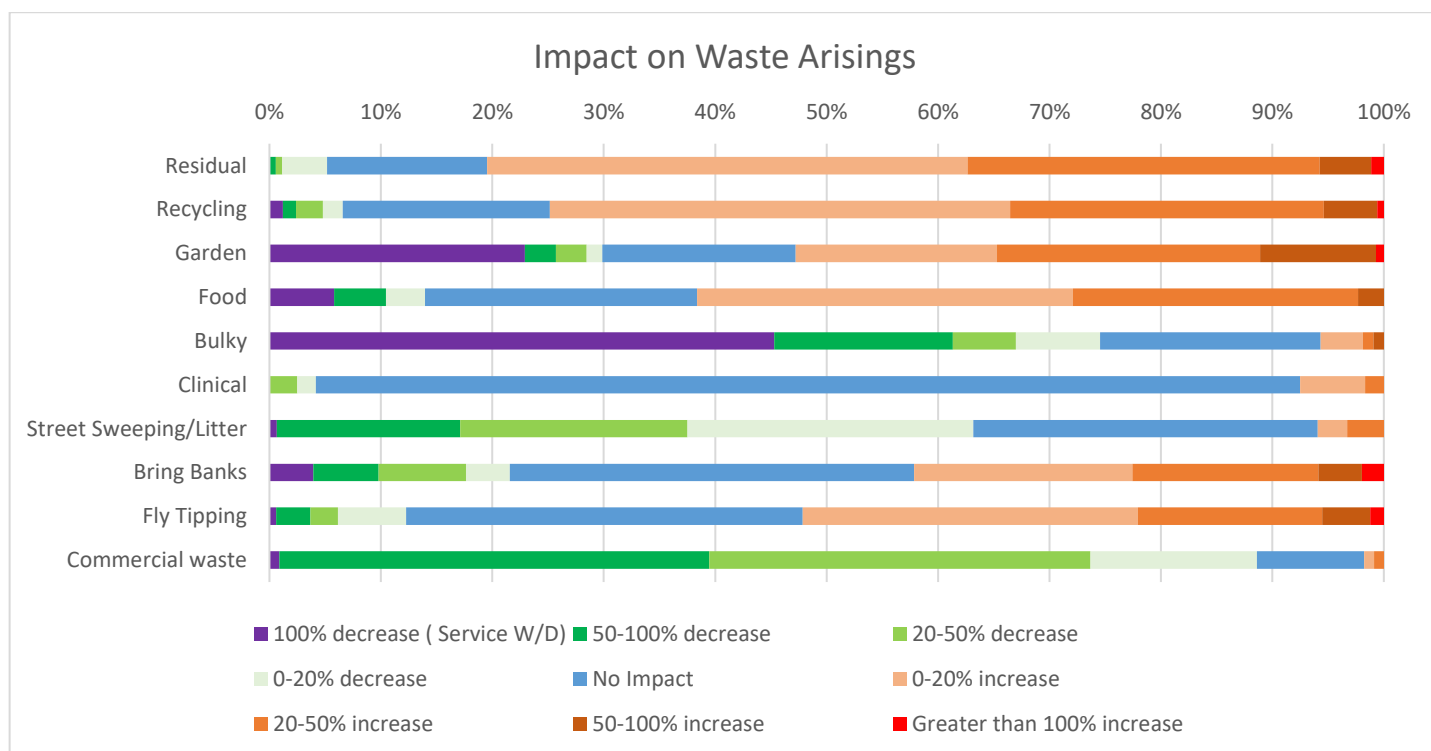
	Residual	Recycling	Garden	Food	Bulky	Clinical	Street Sweeping Litter	Bring Banks	Fly Tipping	Commercial waste
50-100% decrease	1%	1%	4%	5%	29%	0%	17%	6%	3%	39%
20-50% decrease	1%	2%	4%	0%	10%	3%	21%	8%	2%	35%
0-20% decrease	4%	2%	2%	4%	14%	2%	26%	4%	6%	15%
No Impact	14%	19%	23%	26%	36%	88%	31%	38%	36%	10%
0-20% increase	43%	42%	23%	36%	7%	6%	3%	20%	30%	1%
20-50% increase	32%	28%	31%	27%	2%	2%	3%	17%	17%	1%
50-100% increase	5%	5%	14%	2%	2%	0%	0%	4%	4%	0%
Greater than 100% increase	1%	1%	1%	0%	0%	0%	0%	2%	1%	0%





## Changes in Waste Arisings (inc withdrawn services)

	Residual	Recycling	Garden	Food	Bulky	Clinical	Street Sweeping Litter	Bring Banks	Fly Tipping	Commercial waste
100% decrease (service W/D)	0%	1%	23%	6%	45%	0%	1%	4%	1%	1%
50-100% decrease	1%	1%	3%	5%	16%	0%	16%	6%	3%	39%
20-50% decrease	1%	2%	3%	0%	6%	3%	20%	8%	2%	34%
0-20% decrease	4%	2%	1%	3%	8%	2%	26%	4%	6%	15%
No Impact	14%	19%	17%	24%	20%	88%	31%	36%	36%	10%
0-20% increase	43%	41%	18%	34%	4%	6%	3%	20%	30%	1%
20-50% increase	32%	28%	24%	26%	1%	2%	3%	17%	17%	1%
50-100% increase	5%	5%	10%	2%	1%	0%	0%	4%	4%	0%
Greater than 100% increase	1%	1%	1%	0%	0%	0%	0%	2%	1%	0%



## Headlines

Core waste arisings have generally increased. 81% of WCAs report an increase in the amount of residual waste collected, 76% report an increase in the amount of recyclable materials, and 65% report an increase in the amount of food waste collected.

Garden waste tonnages have increased in over two thirds (68%) of those places where the collection service is still operating.

89% of collection authorities report a significant decrease in the level of commercial waste, reflecting the current economic situation.

Half (51%) of councils reported an increase in fly tipping.