

Prevention quantitative targets of the Brussels 4th Waste Plan : first evaluation

7 November 2012

fbonnet@environnement.irisnet.be

WASTE DEPARTEMENT



BRUXELLES ENVIRONNEMENT

IBGE - INSTITUT BRUXELLOIS POUR LA GESTION DE L'ENVIRONNEMENT

Presentation structure

1. Prevention targets regarding household waste

- ▶ Calculation method
- ▶ Global target : Participation to the campaign « Less 100 kg »
- ▶ Specific targets (paper/packaging/others)
- ▶ Evaluation

2. Prevention targets regarding non household waste

- ▶ Schools
- ▶ Offices

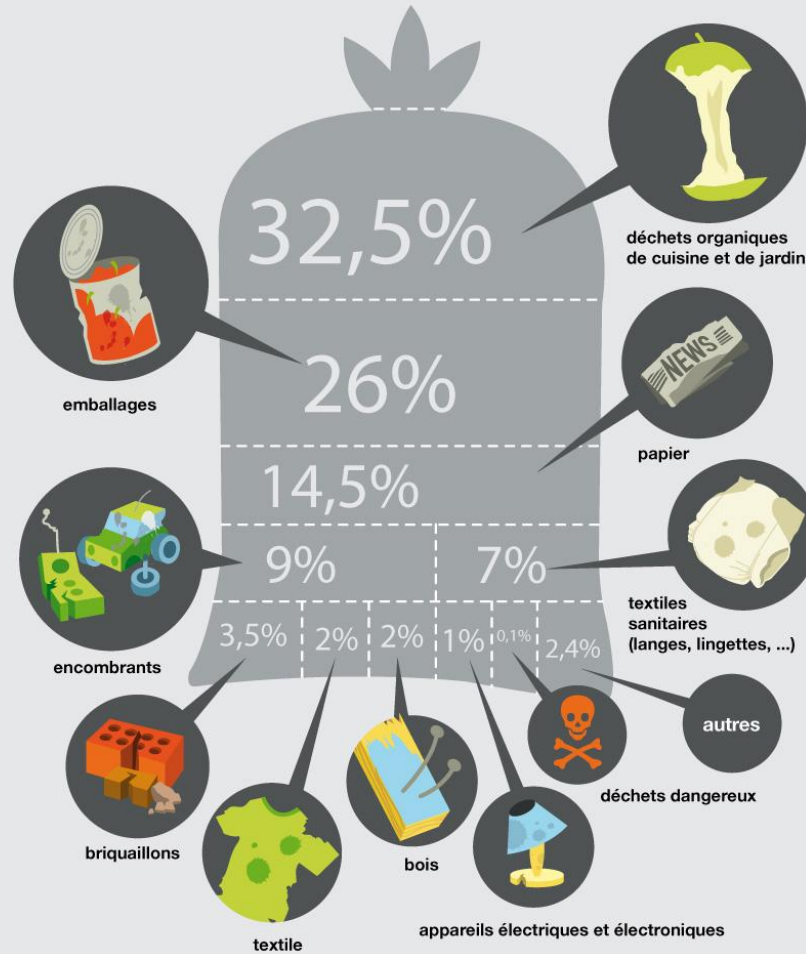
3. Conclusion



Brussels current situation (2008)

NOTRE POUBELLE AUJOURD'HUI = 400 KG/AN/HABITANT

COMPOSITION DU SAC POUBELLE MÉNAGER À BRUXELLES



ANNEXE II : MODES DE CALCUL DES POTENTIELS DE PREVENTION REPRIS DANS LE PLAN

Avertissement :

Les chiffres sont arrondis !

Ceci peut engendrer les constats suivants :

- un % de participation de 1% aboutit à une réduction inférieure au kg et est donc arrondi à « 0 »
- lors d'une somme de deux « 0 », on peut aboutir au chiffre 1.

Ménages

Organiques

	Gis 2005 (T)	% déjà participant	% effet attendu	% participation potentielle	Réduction déjà effective (kg/hab/an)	Potentiel de réduction (kg/hab/an)	Potentiel de réduction restant (kg/hab/an)	Réduction individuelle En kg, arrondi
Anti-gaspi alimentaire	15.000	1%	80%	40%	0	5	5	12
Compostage déchets alimentaires	30.000	12%	75%	40%	3	10	7	25
Compostage déchets de jardin	30.000	12%	75%	60%	3	15	12	avec jardin : 75 sans : 0

Papier

	Gis 2005	% déjà participant	% effet attendu	% participation potentielle	Réduction déjà effective (kg/hab/an)	Potentiel de réduction (kg/hab/an)	Potentiel restant (moy régionale)	Reduction individuelle
Anti-pub	9.000	12%	100%	45%	1	4	3	10
Démat journaux, magazines	10.000	0%	30%	30%	0	1	1	3
Démat A4...	6.000	0%	50%	40%	0	1	1	3
Démat bottins	5.000	0%	100%	40%	0	2	2	5

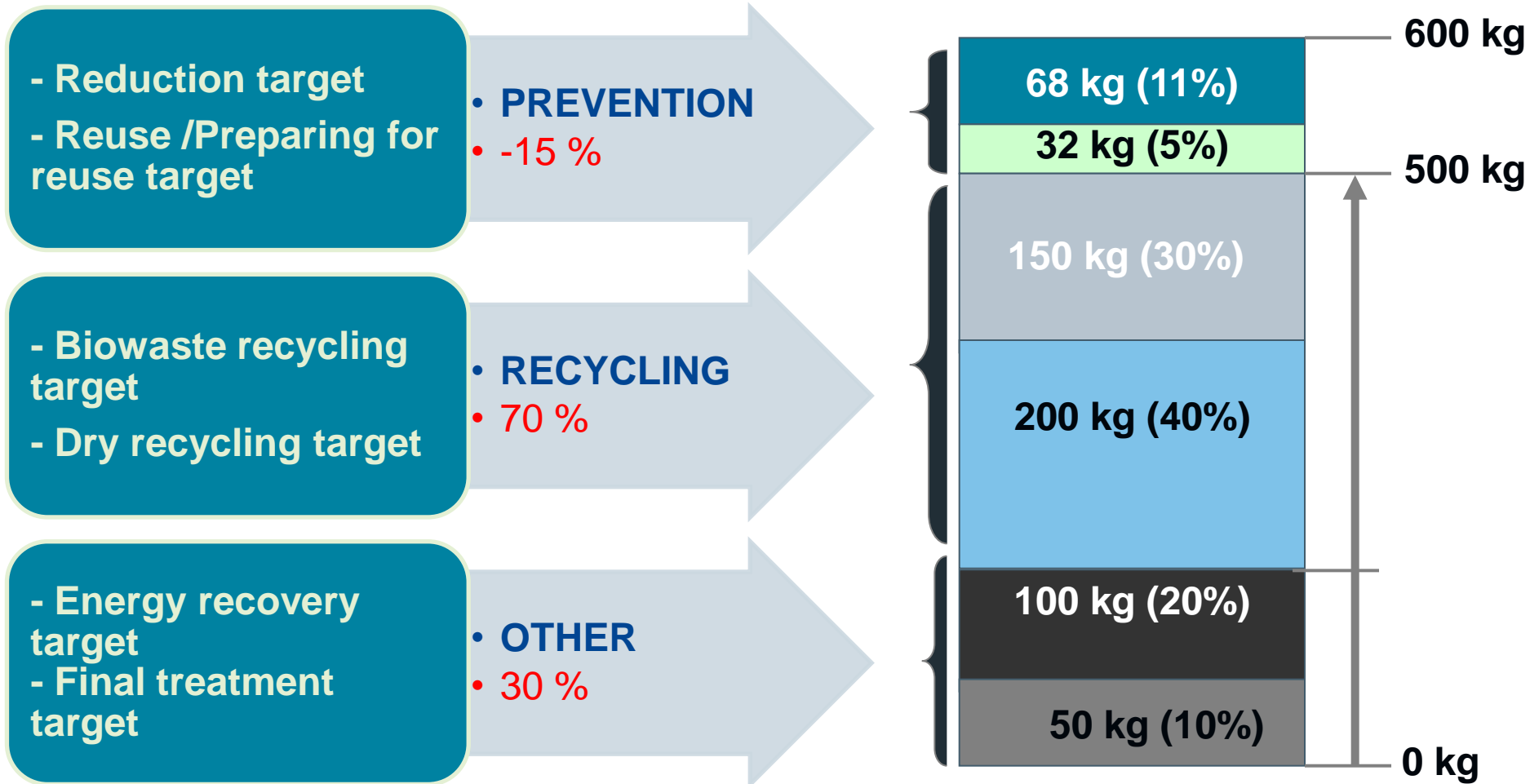
Emballages

	Gis 2005	% déjà participant	% effet attendu	% participation potentielle	Réduction déjà effective (kg/hab/an)	Potentiel de réduction (kg/hab/an)	Potentiel restant (moy régionale)	Reduction individuelle
Eau du robinet	5.000	15%	100%	50%	1	3	2	6
Non aux sacs de caisse jetables	1.000	10%	90%	90%	0	1	1	1
Consigne	12.000	5%	50%	50%	0	3	3	6
Concentré, non sureballé...	35.000	0%	25%	50%	0	4	4	9



Less 100 kgs

ACR+ campaign



Household waste: specific targets

Food waste

Targets :

Less 2kg/hab/year Horizon 2013

Less 5kg/hab Horizon 2020 or

Less 5,000 T / H2020

Paper waste

Targets:

- Less 3kg/inh/year Horizon 2013

- Less 7kg/inh / Horizon 2020 or

Less 7,000 T / Horizon 2020



Household waste: specific targets

Organic waste

Targets:

- Less 5kg/inh/year Horizon 2013
- Less 10kg/inh: Horizon 2020 or

Less 10,000 T Horizon 2020

Packaging waste

Targets:

- Less 4 kg/inh/year Horizon 2013
- Less 10kg/inh/ Horizon 2020

Less 10,000 T Horizon 2020



Household waste: Evaluation

- **Global observation: Lack of reliable data**

- ▶ Quantitative targets based on 2005 data
- ▶ 2011 : new methodology → 2005 data under estimated?

→ Perspective 2011 methodology to be confirmed by the end of 2012 which could lead to a modification of the quantitative targets

- **Difficulties to find appropriate indicators, especially quantitative ones**

→ Participation to the European « Pre-Waste » project (good practices, indicators)



Household waste: Evaluation

Some qualitative evaluation:

- Paper waste:

2009 -> 2012 : stickers distribution campaigns

Post office Counting :

2003/2007 : 12%

2010 : 18%

2012 : 21%



- Organic waste :

-Home composting:

15% in 2009

17% in 2012

-Neighborhood composting:

27 sites between 2009 and 2011

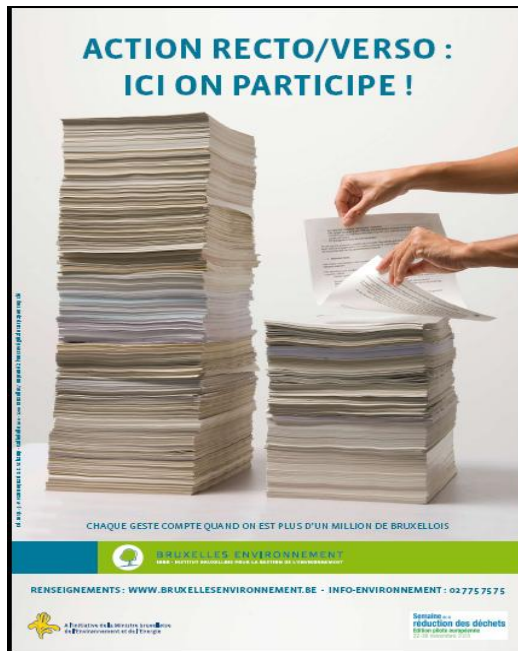
38 sites end of 2011



Similar waste

Offices (340,000 jobs)

- ✓ Paper waste (target : - 30 kg/worker/Horizon 2020)
- ✓ Food waste (target : - 6kg/wk/Horizon 2020)
- ✓ Packaging waste (target: -1kg/wk/Horizon 2020)



Similar waste

Schools (200,000 students)

- ✓ Paper waste (target: - 2.5kg/student/Horizon 2020) :
 - ✓ Packaging waste (target: -1kg/st/Horizon 2020)
 - ✓ Food waste (target: - 3kg/st/Horizon 2020)
- **Global target: - 6.5 kg/st/ Horizon 2020)**



Similar waste

Schools : Results from 2008 - 2009 to 2011 - 2012

- **18 schools** developed a global project “less waste at school”, **17 schools presented** a project for 2012-2013
waste paper decrease of 10 to 17%
food waste decrease between 4,4 and 45%
- Each year, between **680 students (34 classes)** and **2360 students (168 classes)** are concerned by specific actions organised at school (workshop, “good practices”,...)
- **Between 3500 (2008) and 29 250 students (2009)** participated to a one day campaign called “effet de jeunes contre effet de serre” having a direct link with waste reduction



Conclusions

- **Need of quantitative targets in order to boost prevention policy**
- **Need of good knowledge of waste quantity produced + waste composition**
- **Difficulties to measure the effectiveness of prevention measures**
- **Specific waste stream approach complementary to a global approach**

